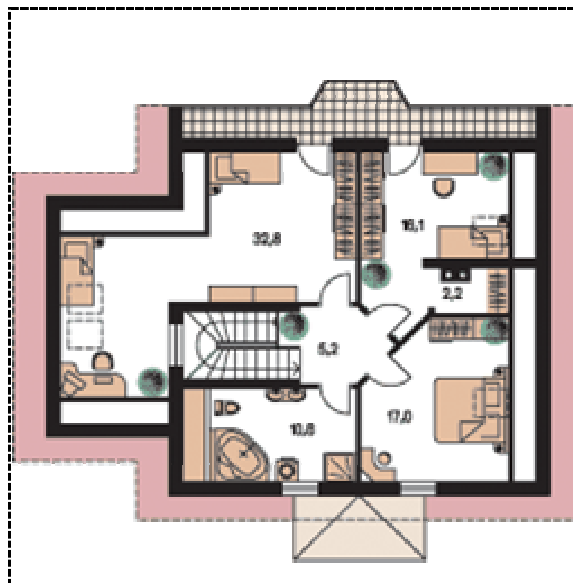


Example Budget

Intelligent Electroinstallation INELS® for a Family House

07/2009



Introduction

The purpose this example project was created for is the intent to make the potential system partners and end users familiar with a reference price level of the intelligent electrical installation **INELS®** in a family house. Applications are designed in two versions:

- *basic version,*
- *enhanced version.*

The basic variant counts on the option for completing the system with other two elements to reach the higher comfort of the enhanced version.

Basic Version

This version includes the basic functions of **INELS®** system:

- *switching of lighting system – internal and external - 18 circuits,*
- *dimming of lighting system - 4 circuits,*
- *central control of heating*
- *remote access and operation via Internet and visualization by means of PDA.*

Higher comfort which means both IR remote control and wall-mounted IR receiver is considered in this version already. This variant enables creation of central functions and lighting scenes with remote supervision possibility.

<i>Item number</i>	<i>Name</i>	<i>Quantity pcs</i>	<i>Price pcs</i>	<i>Total price</i>
1	CU2-01M Central unit	1	393,80	393,80
2	PS-100/INELS Power supply unit	1	56,32	56,32
3	SA2-12M (12x8A) Switching unit	1	219,56	219,56
4	SA2-04M (4x16A) Switching unit	1	123,20	123,20
5	SA2-02M (2x16A) Switching unit	1	102,52	102,52
6	DA2-22M (2x500W) Dimming unit	2	155,54	311,08
7	IART2-01 Analogous system thermoregulator (with frame)	1	82,24	82,24
8	WSB2-20 Push-button unit (with cover and frame)	14	48,93	684,99
9	WSB2-40 Push-button unit (with cover and frame)	4	60,41	241,65
10	Sophy2-L Multi-functional unit (with cover and frame)	1	178,29	178,29
11	IR Remote control unit (by the actual offer)	1	11,70	11,70

Total: 2 405,35 EUR

The listed prices are the basic prices of ELKO EP, s.r.o.

Remark:

The draft does not include the following:

- the standard wiring elements, that is, circuit breakers, switchboards, sockets, cables, and other auxiliary materials for family house,
- design jobs,
- assembly jobs,
- setting of the system.

Enhanced Version

This version gives higher level comfort and it completes the basic version – that is, lighting control, dimming of the lights, central control of heating – with additional functions:

- roller-blind system control - 18x,
- IRC (individual room control) – individual temperature control in the rooms - 7x,
- control (switching) of the socket circuits - 16x,
- operation using SMS

Item number	Name	Quantity pcs	Price pcs	Total price
1	CU2-01M Central unit	1	393,80	393,80
2	PS-100/INELS Power supply unit	1	56,32	56,32
3	JA2-02B Roller-blind actuator	18	63,80	1148,40
4	SA2-12M (12x8A) Switching unit	1	219,56	219,56
5	SA2-04M (4x16A) Switching unit	5	123,20	616,00
6	SA2-02M (2x16A) Switching unit	1	102,52	102,52
7	DA2-22M (2x500W) Dimming unit	2	155,54	311,08
8	IART2-01 Analogous system thermoregulator (with frame)	7	82,24	575,68
9	WSB2-20 Push-button unit (with cover and frame)	14	48,93	684,99
8	WSB2-40 Push-button unit (with cover and frame)	4	60,41	241,64
9	Sophy2-L Multi-functional unit (with cover and frame)	1	178,29	178,29
10	IR Remote control unit (by the actual offer)	1	11,70	11,70
11	GSM module GSM2-01	1	431,20	431,20

Total: 4 971,19 EUR

The listed prices are the basic prices of ELKO EP, s.r.o.

Remark:

The draft does not cover the elements given in the basic version, including:

- the standard wiring elements, that is, circuit breakers, switchboards, sockets, cables, and other auxiliary materials for family house,
- design jobs,
- assembly jobs,
- setting of the system
- PDA,
- Internet connection,
- computer network configuration.

Conclusion:

The example budget variants may be used for reference only. The solution for **INELS**[®] system installation is always an individual solution where the price budget is determined for a specific house on the basis of the required functions only.

In case you are interested in a particular budget variant we are ready to consult such variant with you to develop it according to your requirements and ideas.